

SUPERFICIES ÚTILES / USABLE AREA

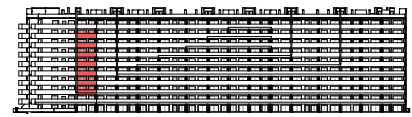
SUPERFICIES ÚTILES INTERIORES / USABLE INTERIOR AREA	
1 PASO / HALLWAY	2,93 m ²
2 ESTAR-COM.- COCINA / KITCHEN-LIVING	29,68 m ²
3 TENEDERO (100%) / UTILITY ROOM	4,00 m ²
4 DORMITORIO 01 / BEDROOM 01	10,47 m ²
5 DORMITORIO 02 / BEDROOM 02	9,92 m ²
6 BAÑO 01 / BATHROOM 01	3,20 m ²
7 BAÑO 02 / BATHROOM 02	3,53 m ²
	63,73 m ²

SUPERFICIES ÚTILES EXTERIORES / USABLE EXTERIOR AREA	
8 TERRAZA 01 (100%) / TERRACE 01	24,57 m ²
	24,57 m ²

SUP. ÚTIL TOTAL / TOTAL USABLE AREA	88,30 m ²
-------------------------------------	----------------------

SUPERFICIES CONSTRUIDAS / BUILT AREA

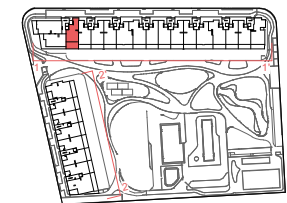
SUP. CONST. INTERIOR / INTERIOR BUILT AREA	69,65 m ²
SUP. CONST. EXT (50%) / EXT. BUILT AREA	15,05 m ²
SUP. CONST. Z/C / BUILT AREA SHARED AREAS	10,56 m ²
SUP. CONS. TOTAL / TOTAL BUILT AREA	95,25 m ²



ALZADO 1-1'



ALZADO 2-2'



mayo 2025

